

CERTIFICATE OF LOCATION OF GOVERNMENT CORNER

NORTH QUARTER Corner of Section 9, Township 106, Range 39, 5TH P.M.

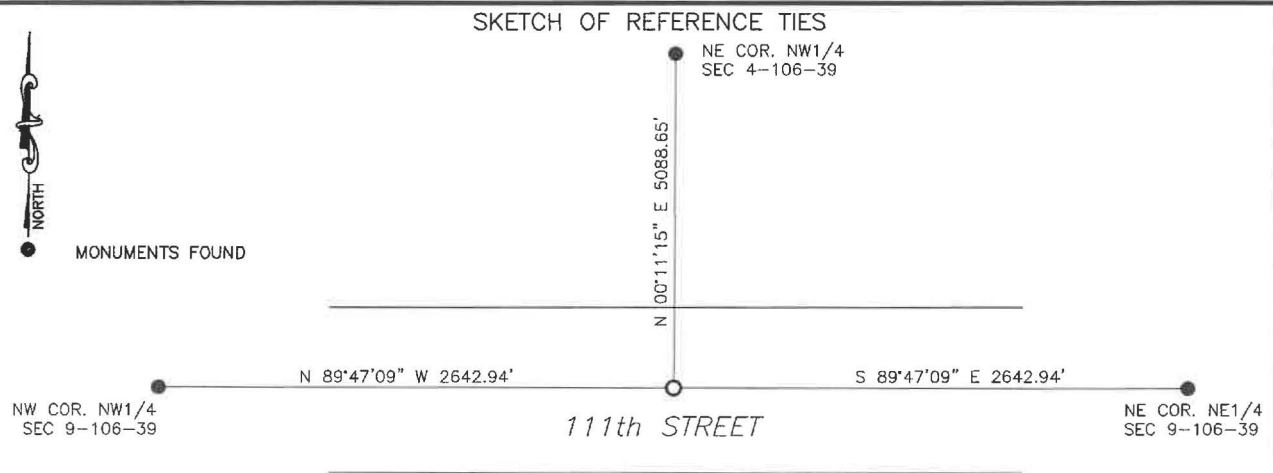
STATE OF MINNESOTA, County of MURRAY

At the corner location shown on the sketch:

☐ On _____ found a _____
DATE

☐ left monument as found, ☐ lowered monument, ☐ removed monument (explain)

☒ On 1/16/2025 placed a 5/8" iron with seal #43844 midway and on line.
DATE



Murray County
Coordinate System NAD83 (1996)

N: 158380.840
E: 561498.160

WGS84

LAT: 44°00'28.6393"
LON: -95°31'58.6059"

Statement of evidence relative to this corner location is on back of page.

I hereby certify that this document and the data contained herein was prepared by me or under my direct supervision.

Daniel L. Bueltel
License No. 43844

3/12/2025
DATE

MAR 13 2025

MURRAY COUNTY RECORDER

Statement of Evidence

NORTH QUARTER CORNER SECTION 9, T106N, R39W of the 5th P.M.

In September 1858, W.J. Neely surveyed the east township line.

In July of 1861, J.W. Myers surveyed the north, south, and west township lines.

In August of 1861, Wellman & Smoot subdivided the township.

On June 28, 2024, Bueltel- Moseng Land Surveying searched the area and found nothing.

On July 23, 2024 Bueltel-Moseng Land Surveying dug a 7'x4.5'x4' deep hole with a backhoe midway and online between the section corners. Did not find anything, corner location appears to be in a cut area.

Returned on January 16, 2025 and set a $\frac{5}{8}$ " iron with seal #43844 midway and on line between section corners.